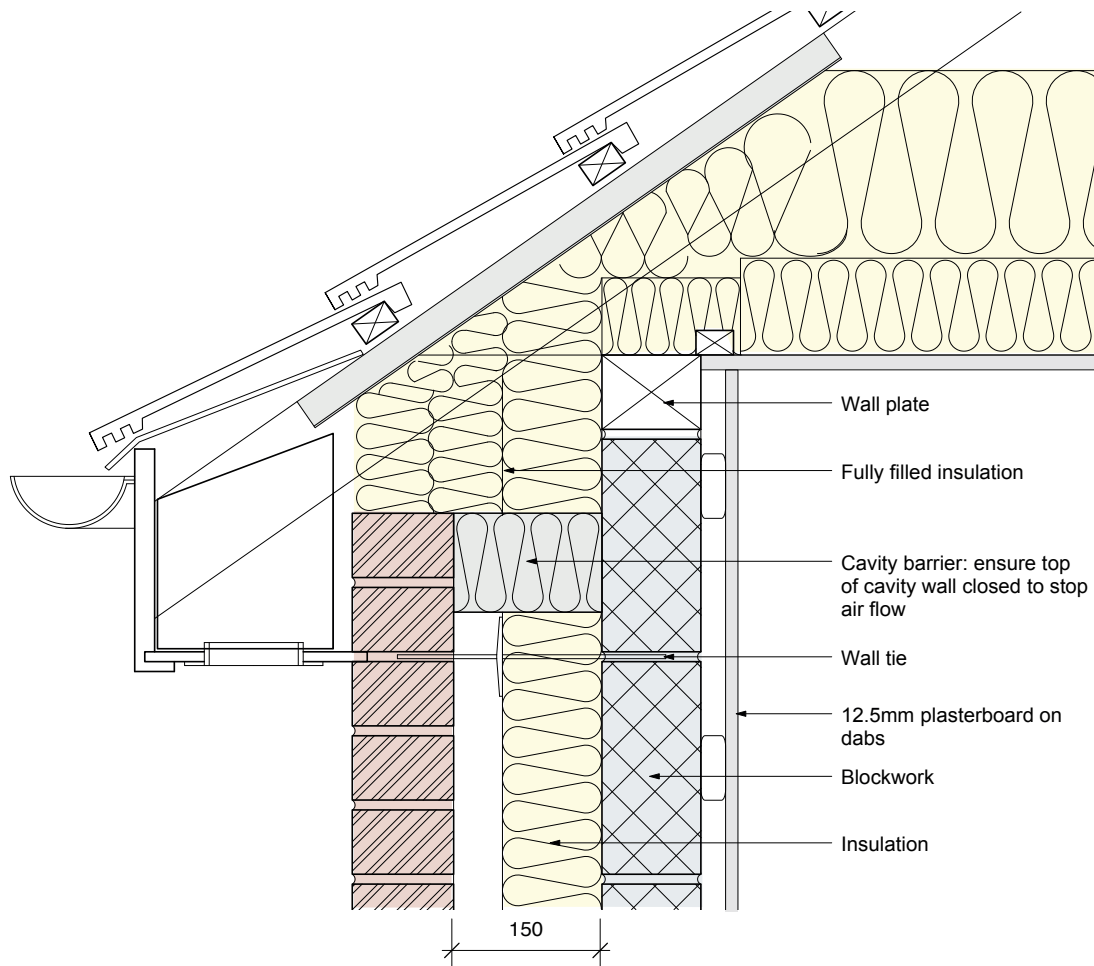


E10: Pitched roof eaves insulation at ceiling level



Requirements

- The cavity must be closed at the top of the wall for the provisions of Diagram 5.3 ADBv1 to apply.

Notes :

- Close cavity at top of the wall to the underside of roof covering.
- Cavity barriers should be tightly fitted to a rigid construction and mechanically fixed in position. If this is not possible (e.g. where a cavity barrier joins to slates, tiles, corrugated sheeting or similar materials) the junction should be fire-stopped. Refer to ADBV1 Section 5.
- Ensure product data sheets and details are reviewed to check compatibility with construction junctions.
- Horizontal/vertical cavity barriers need to be fixed in accordance with manufacturers guidelines.
- If fixing spikes are specified, they should be installed at the required centres.
- For compression fit cavity barriers, specify the correct size according to the cavity width.