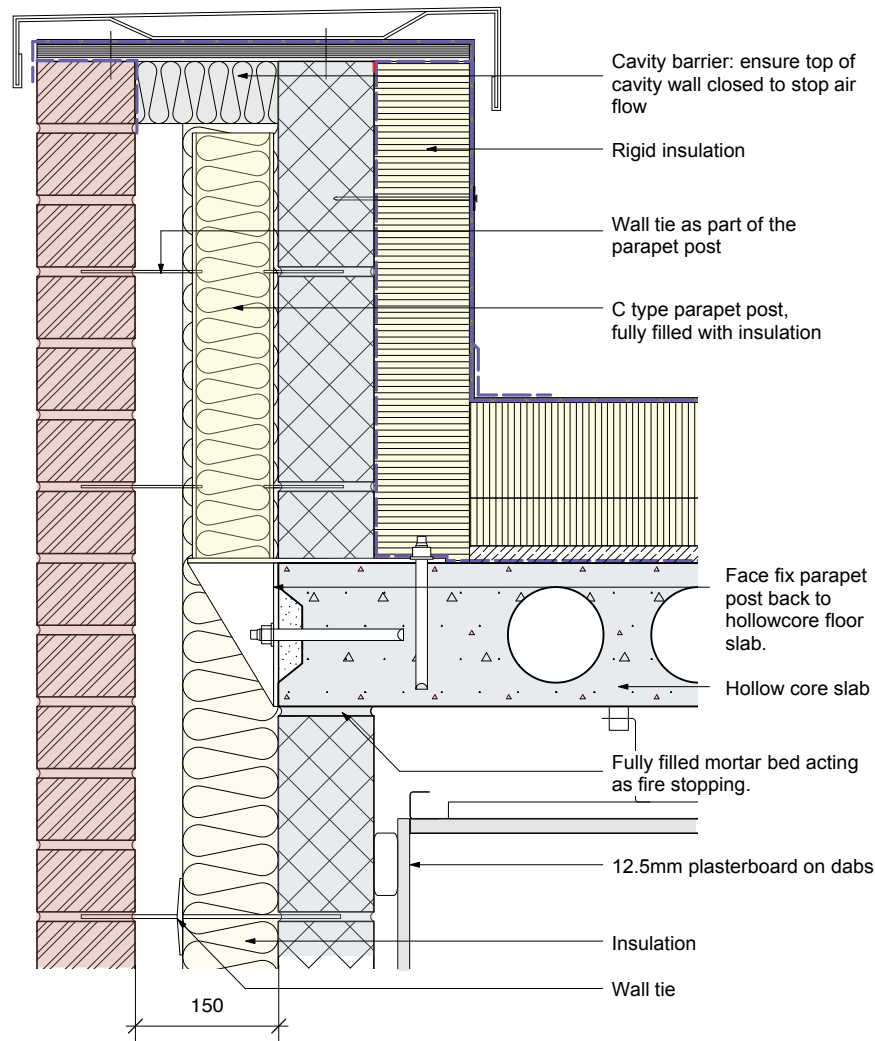


E10: Parapet roof junction - 'C' parapet post



Requirements

- The cavity must be closed at the top of the wall and underside of parapet for the provisions of Diagram 5.3 ADBv1 to apply.

Notes :

- When fixing back to a hollowcore floor slab, it is good practice to use a resin type fixing as this will not stress the concrete when installing the wind posts.
- Ensure the parapet post fixes into a solid concrete floor slab area, rather than a hollow section.
- Full fill the C type Parapet post void with insulation.
- Joints between fire-separating elements should be fire-stopped.
- Carefully specify fire-stopping and sealing system that is appropriate to the particular material. Refer to ADBv1 Section 9.
- Ensure the inner-leaf top mortar joint under the floor slab is a fully filled mortar joint to act as a fire stop. Ensure a closed cavity.
- Head restraint may be required to the inner-leaf blockwork to underside of floor slab.