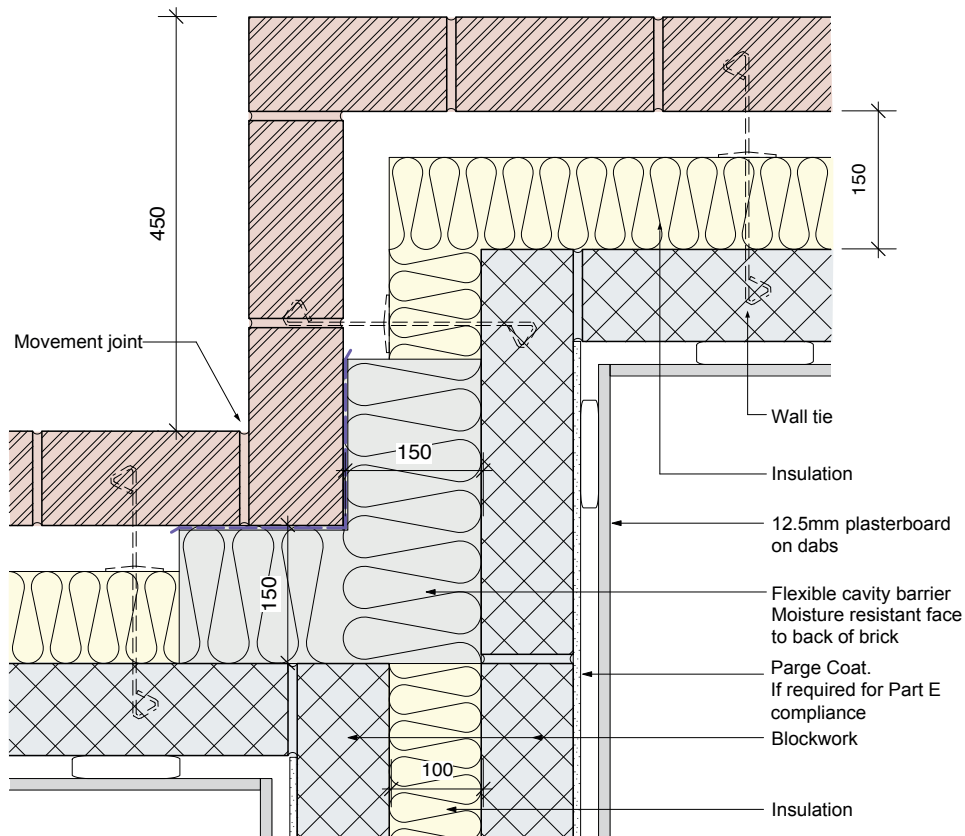


E25: Masonry staggered separating wall



Requirements

- Close the external wall cavity with a flexible cavity barrier.

Notes :

- AD Part E: Type A wall ties at no more than 2.5 ties/m² (900 x 450mm spacing).
- Brick wall ties: No greater than 900mm horizontal spacing. Ties should be positioned within 225mm of the movement joint.
- Specify the correct wall tie length according to the cavity width.
- Ensure product data sheets and details are reviewed to check compatibility with construction junctions.
- Horizontal/vertical cavity barriers need to be fixed in accordance with manufacturers guidelines.
- If fixing spikes are specified, they should be installed at the required centres.
- For compression fit cavity barriers, specify the correct size according to the cavity width.
- Ensure that the cavity barrier is fitted accurately, preferably as a whole 'L' shape form, as there could be the potential for a gap to form behind the external brick leaf 90° angle if the cavity barrier is formed in two pieces.
- This detail conforms with the Mineral Wool Insulation Manufacturers Association (MIMA) good practice guide for thermal and acoustic reasons. When full-fill insulation is used, the cavity barrier is NOT required here to conform with ADBv1 Diagram 5.3 page 54.

See MIMA design guide, *Preventing Thermal Bypasses in Party Separating Walls*.