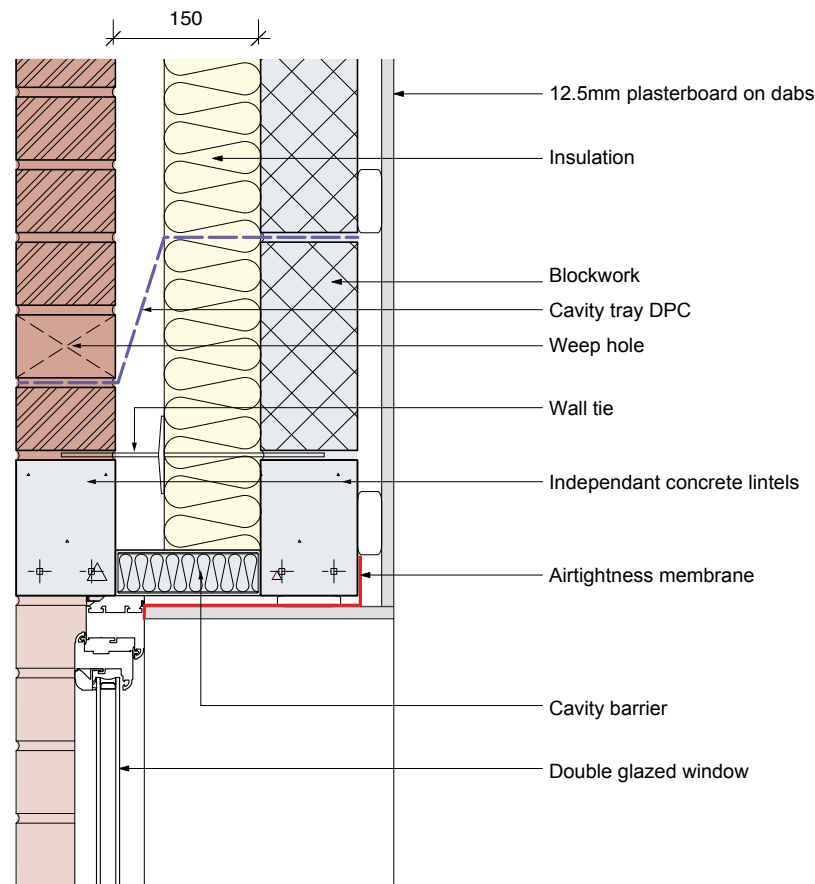


## E2 01: Independent concrete lintel



### Requirements

- In a masonry wall the opening around a window or door head needs to be closed.
- The cavity must be closed at the top of the wall for the provisions of Diagram 5.3 ADBv1 to apply.

### Notes :

- When the window is in line with the outer leaf the cavity can also be closed by the plasterboard lining (12mm min). However, placing the window in this position is not good practice for thermal design.
- First brick tie to be constructed within 225mm of the window head.
- Depending on location: caution if using detail in a location with areas exposed to severe/very severe driving rain. Water ingress may track along tie and drip onto window head. Ensure cavity barrier is specified carefully for application.
- The cavity tray is carried straight across the insulation maintaining a continuous insulation joint. This avoids cutting the insulation at 45 degrees around the cavity tray angle. Easier to build and sequence.
- An insulated cavity closer may be required for thermal reasons (to reduce heat losses from thermal bridging)