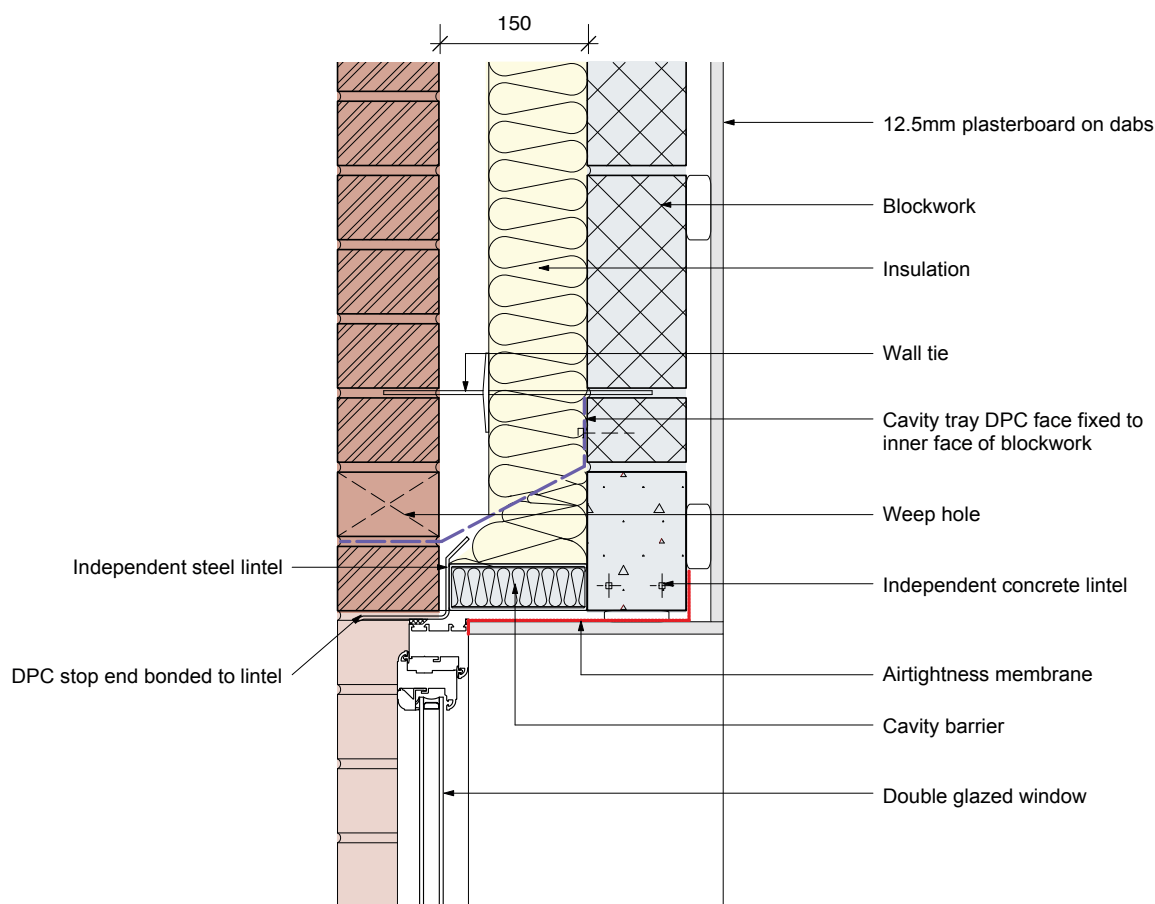


## E2 02: External steel lintel



### Requirements

- In a masonry wall the opening around a window or door head needs to be closed.
- The cavity must be closed at the top of the wall for the provisions of Diagram 5.3 ADBv1 to apply.

### Notes :

- When the window is in line with the outer leaf the cavity can also be closed by the plasterboard lining (12mm min). However, placing the window in this position is not good practice for thermal design.
- Locate the first row of wall ties at 450mm horizontal centres above and below the opening.
- Ensure insulation is fitted above and below the cavity tray.
- An insulated cavity closer may be required for thermal reasons (to reduce heat losses from thermal bridging).
- Secure the cavity tray DPC in place with a compatible double sided adhesive tape to face fix the DPC rather than fixing in the blockwork mortar joint. Avoid fixing the wall tie and cavity tray in the same mortar joint as this could form a slip plane rendering the wall tie ineffective.
- DPC stop ends bonded to the end of the single leaf lintel to prevent any rainwater penetrating the 2 courses of brickwork from running off the lintel into the cavity below.