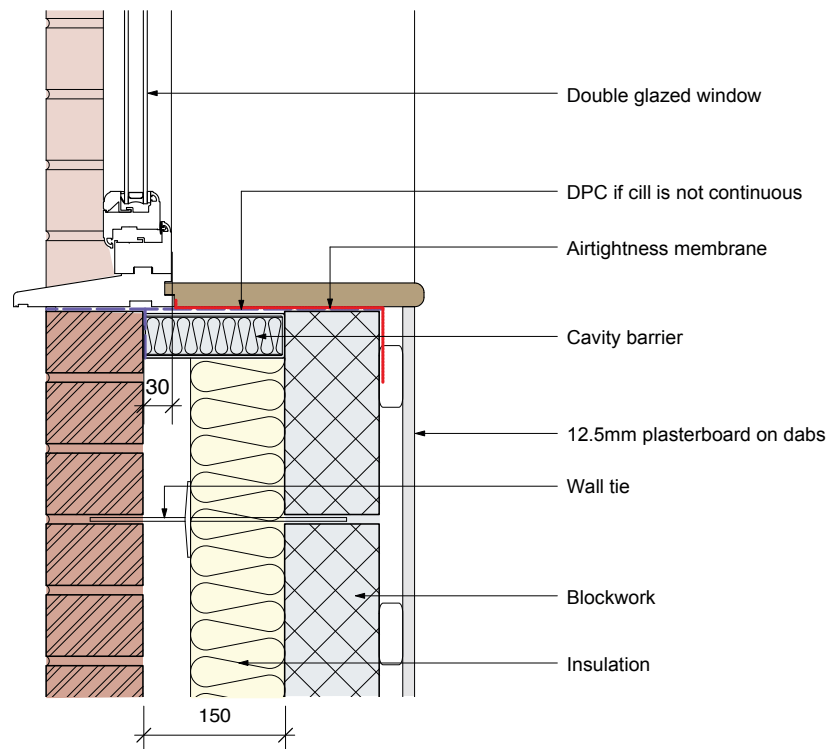


## E3: Cill



### Requirements

- In a masonry wall the opening around a window or door head needs to be closed.
- The cavity must be closed at the top of the wall for the provisions of Diagram 5.3 ADBv1 to apply.

### Notes :

- When the window is in line with the outer leaf the cavity can also be closed by the plasterboard lining (12mm min). However, placing the window in this position is not good practice for thermal design.
- Provide a DPC if the cill is not continuous.
- Dependant upon type of cavity barrier used, a DPC should be provided to the inside face of the brickwork to prevent the cavity barrier absorbing moisture.