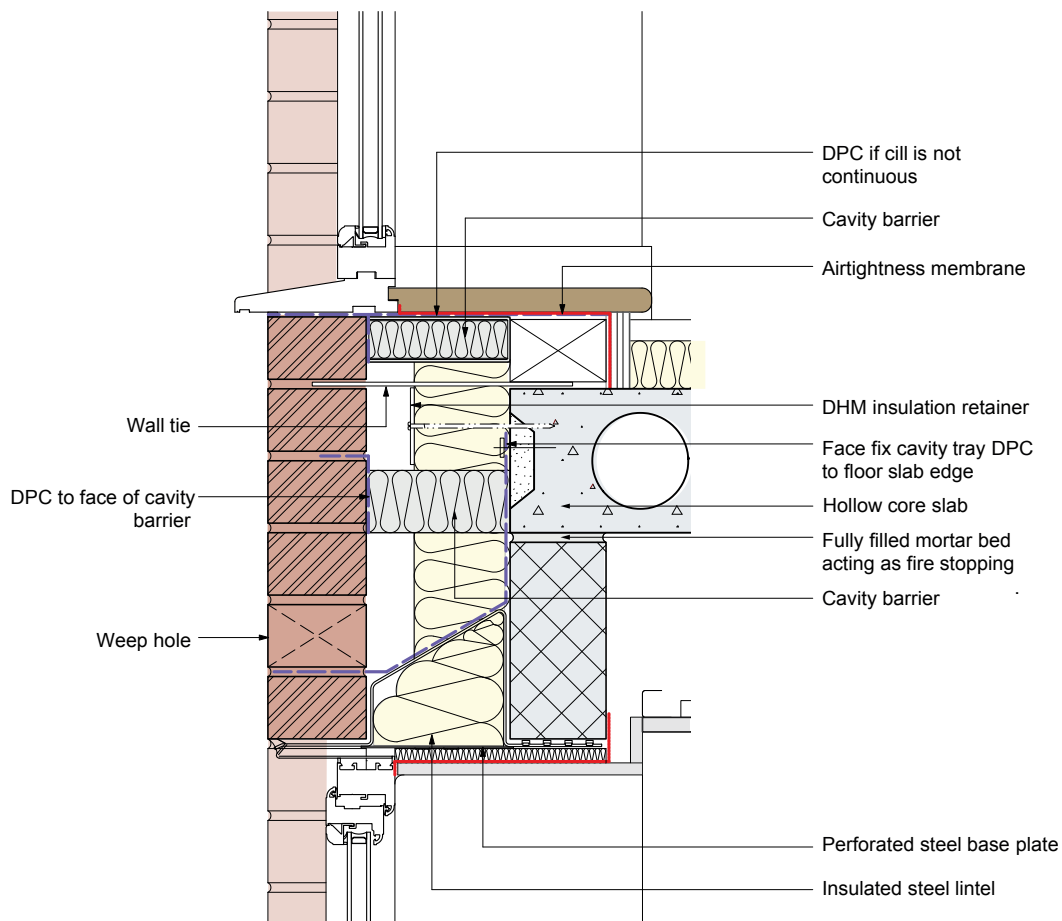


## E3: Cill full height window - Option 2



### Requirements

- In a masonry wall the opening around a window or door head needs to be closed.
- The cavity must be closed at the top of the wall for the provisions of Diagram 5.3 ADBv1 to apply.

### Notes :

- The brick spandrel panel between full height windows can become congested with multiple components performing different roles. Prevent rendering products from being ineffective by overlapping. Instead, secure the cavity tray DPC in place with a compatible double sided adhesive tape to face fix the DPC, rather than fixing in the same inner-leaf mortar joint as this could form a slip plane.
- Option 2 requires the insulation to be cut 45° around the steel lintel profile. This is common practice but it is less easy to build and ensure that the insulation line is continuous.
- Ensure insulation is fitted above the insulated steel lintel.
- Clashes between wall tie insulation retainers and cavity barrier can be avoided by the use of a DHM insulation retainer (or similar) fixed directly back to the floor slab.
- Head restraint may be required to the inner-leaf blockwork to underside of floor slab.
- DPC stop ends bonded to the end of the single leaf lintel to prevent any rainwater penetrating the 2 courses of brickwork from running off the lintel into the cavity below.