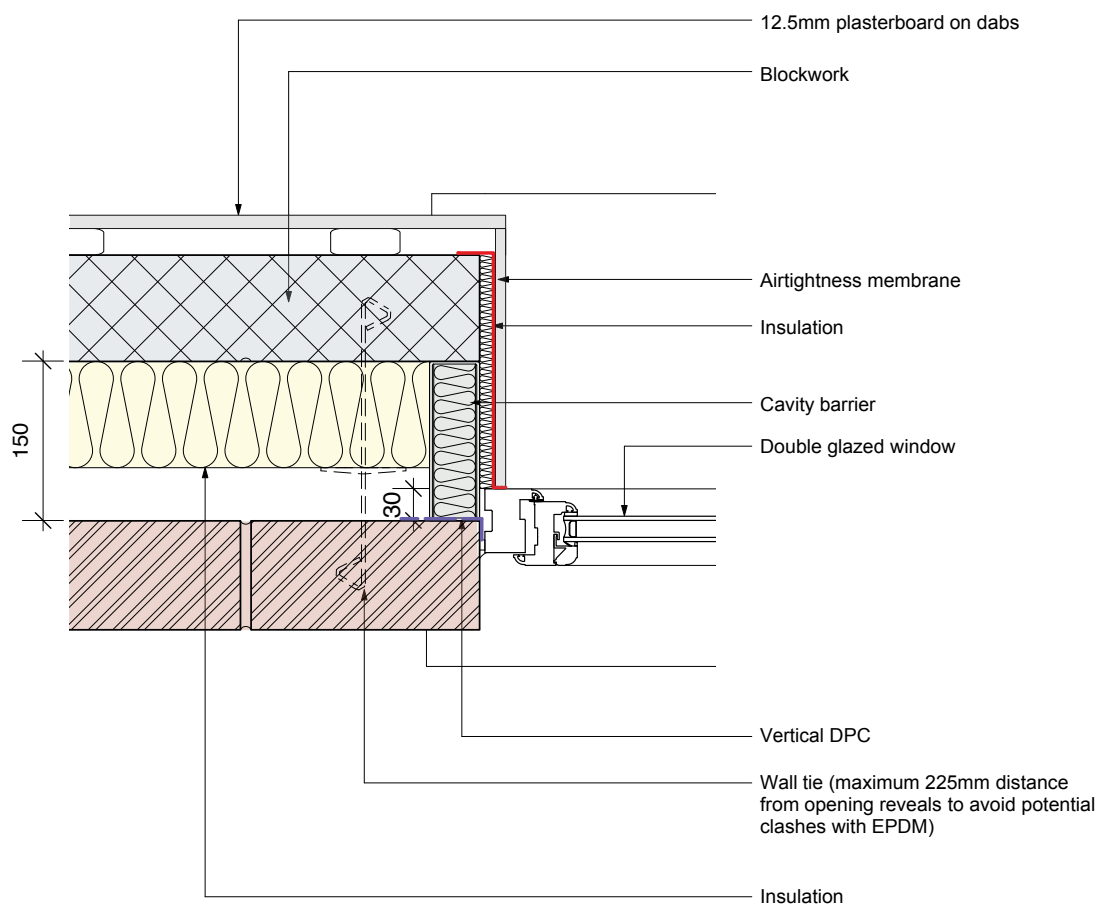


E4: Jamb



Requirements

- In a masonry wall the opening around a window or door head needs to be closed.
- The cavity must be closed at the top of the wall for the provisions of Diagram 5.3 ADBv1 to apply.

Notes :

- When the window is in line with the outer leaf, the cavity can also be closed by the plasterboard lining (12mm min). However, placing the window in this position is not good practice for thermal design.
- Vertical DPC between end the bricks and cavity barrier/window junction.
- Brick wall ties: No greater than 900mm horizontal spacing.