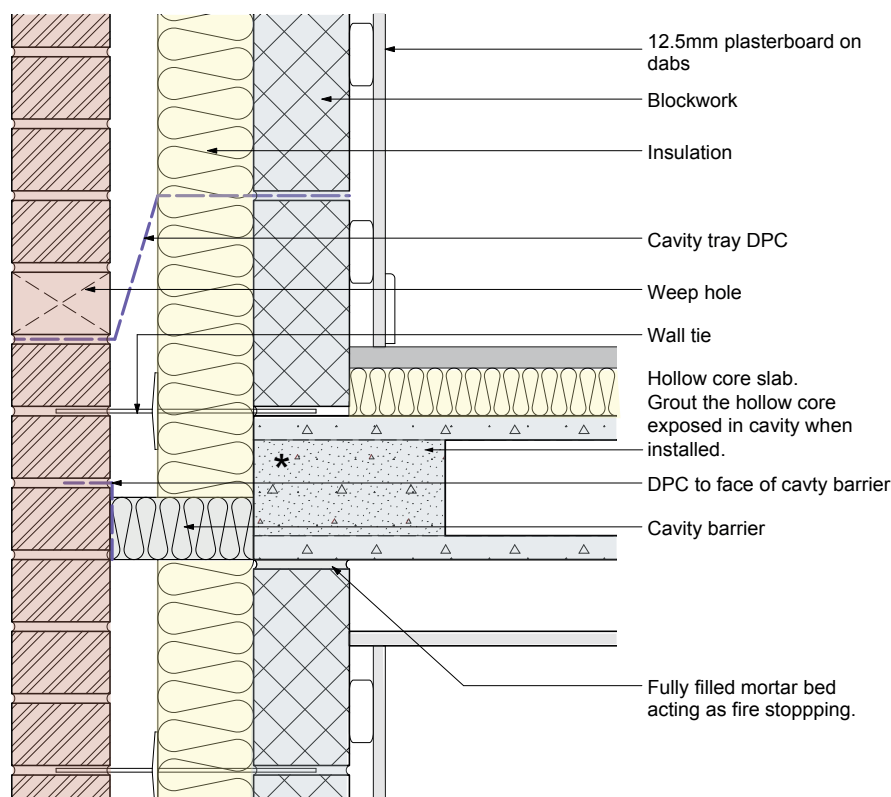


## E7: Concrete intermediate floor (section 2)



\* For the cavity barrier to be installed, the hollowcore slab rebate needs to be filled-in post slab installation to ensure that a cavity barrier can continuously fix to the edge of the slab. Also, ensure that any holes in the hollowcore slab, exposed in the cavity, are filled-in post slab installation to maintain an enclosed cavity to stop the spread of fire and smoke.

### Requirements

- The cavity must be closed at the top of the wall for the provisions of Diagram 5.3 ADBv1 to apply.
- Detail at Party floor/separating floor junctions.

### Notes :

- Fire Stop: joints between fire-separating elements should be fire-stopped.
- Carefully specify fire-stopping and sealing system that is appropriate to the particular material. Refer to ADBv1 Section 9.
- Ensure the inner-leaf top mortar joint under the floor slab is a fully filled mortar joint to act as a fire stop. Ensure a closed cavity.
- Maintain clear separation of components to prevent congestion within the cavity and mortar joints.
- The cavity tray is carried straight across the insulation maintaining a continuous insulation joint. This avoids cutting the insulation at an angle around the cavity tray and makes it easier to build and sequence.
- Horizontal/vertical cavity barriers need to be fixed in accordance with manufacturers guidelines.
- If fixing spikes are specified, they should be installed at the required centres.
- For compression fit cavity barriers, specify the correct size according to the cavity width.
- Head restraint may be required to the inner-leaf blockwork to underside of floor slab.